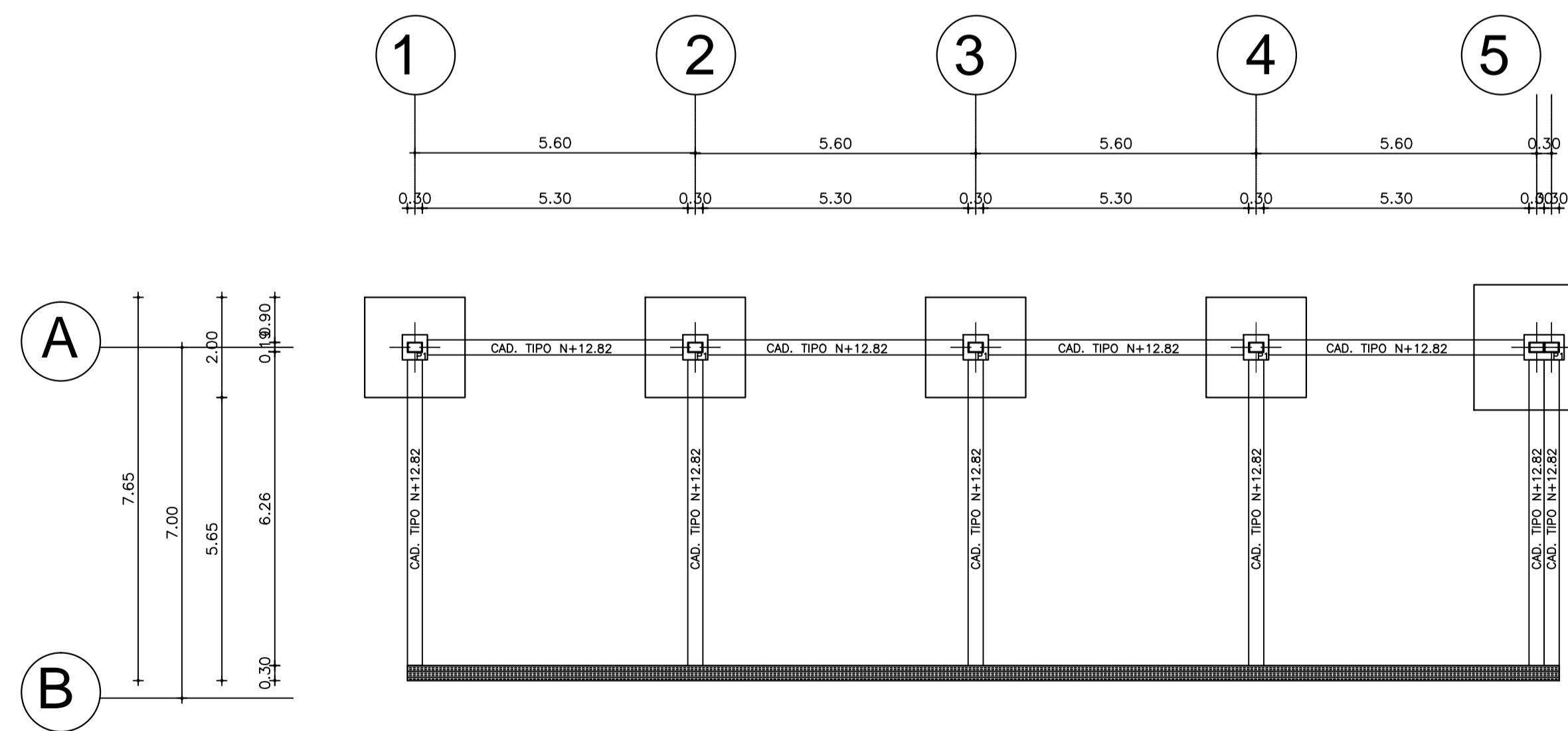
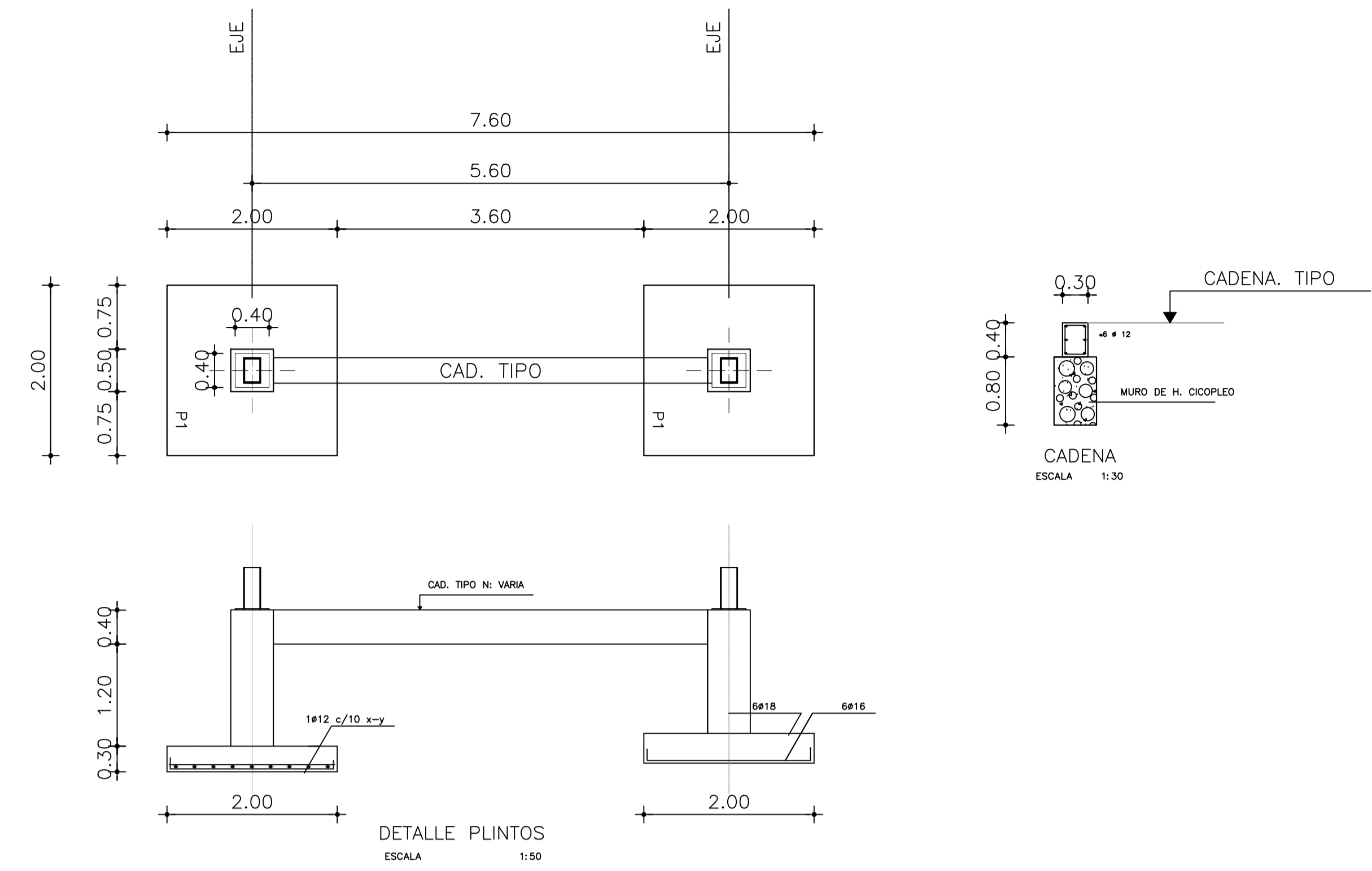


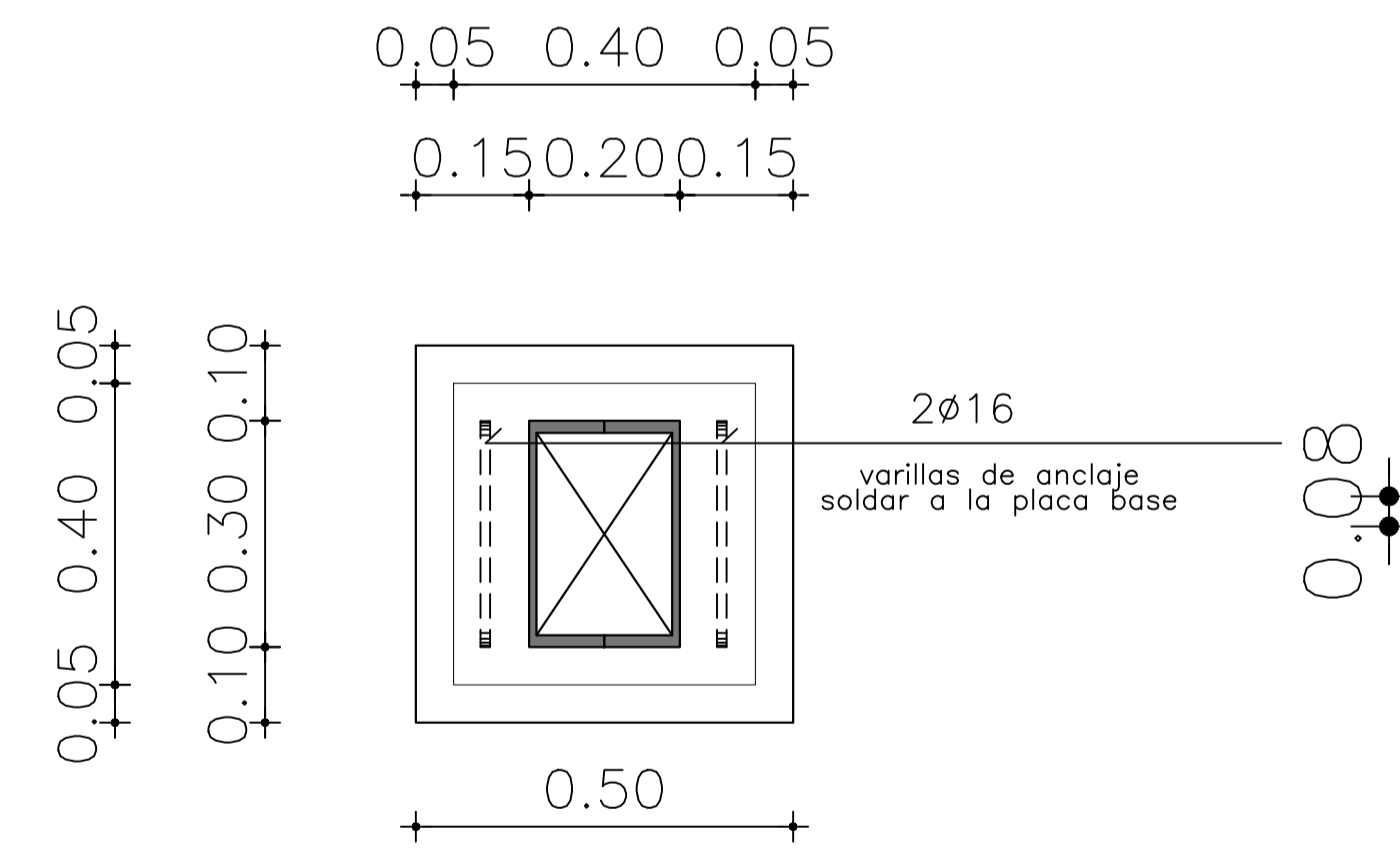
PLANTA DE CIMENTACIÓN  
NIVEL + 7.06 m  
ESCALA 1 ----- 100



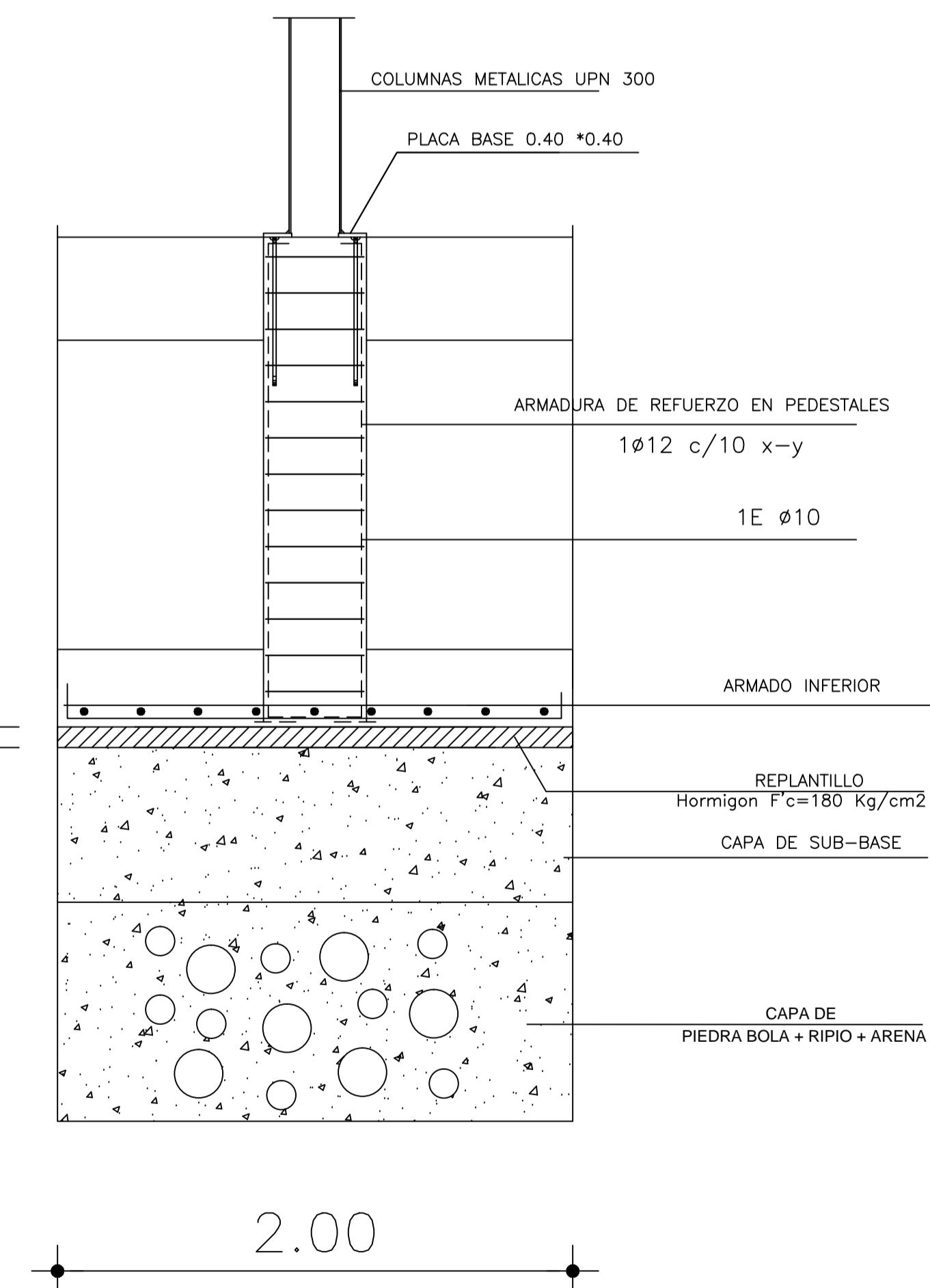
PLANTA DE CIMENTACIÓN  
NIVEL + 12.82 m  
ESCALA 1 ----- 100



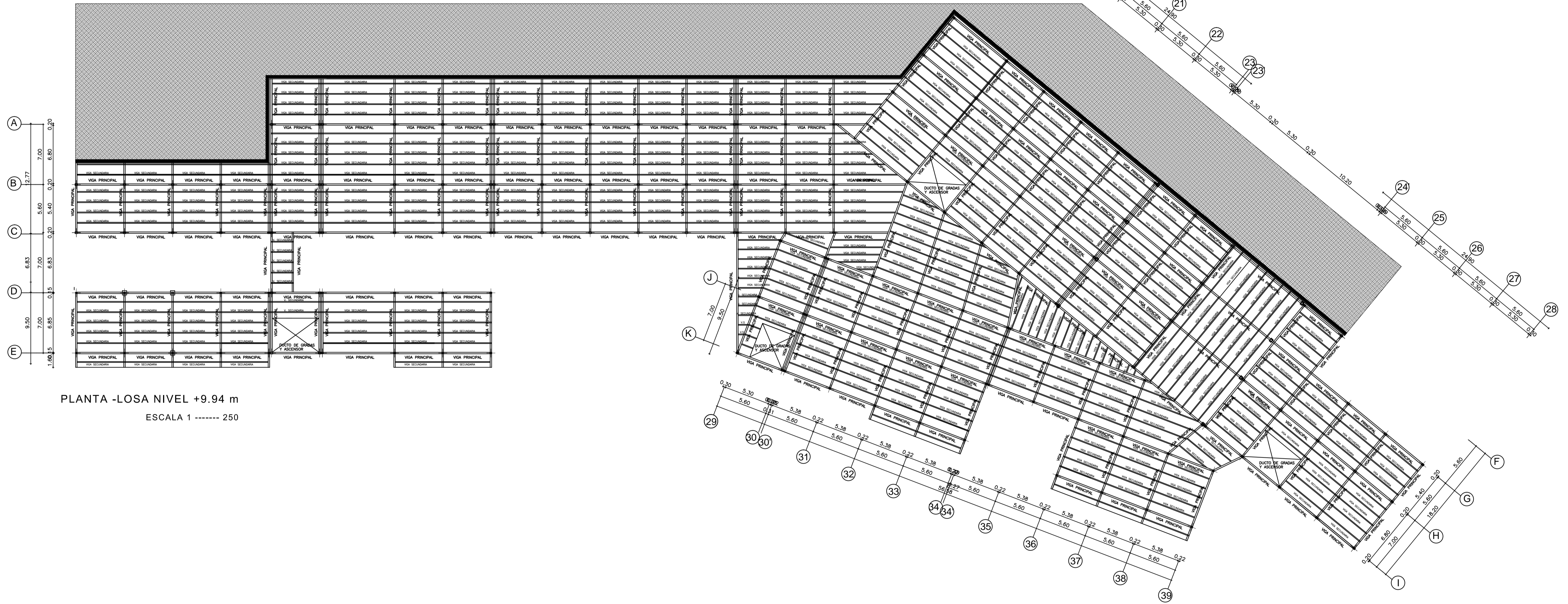
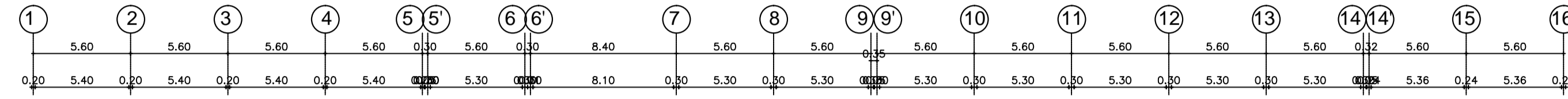
DETALLE PLINTOS  
ESCALA 1:50



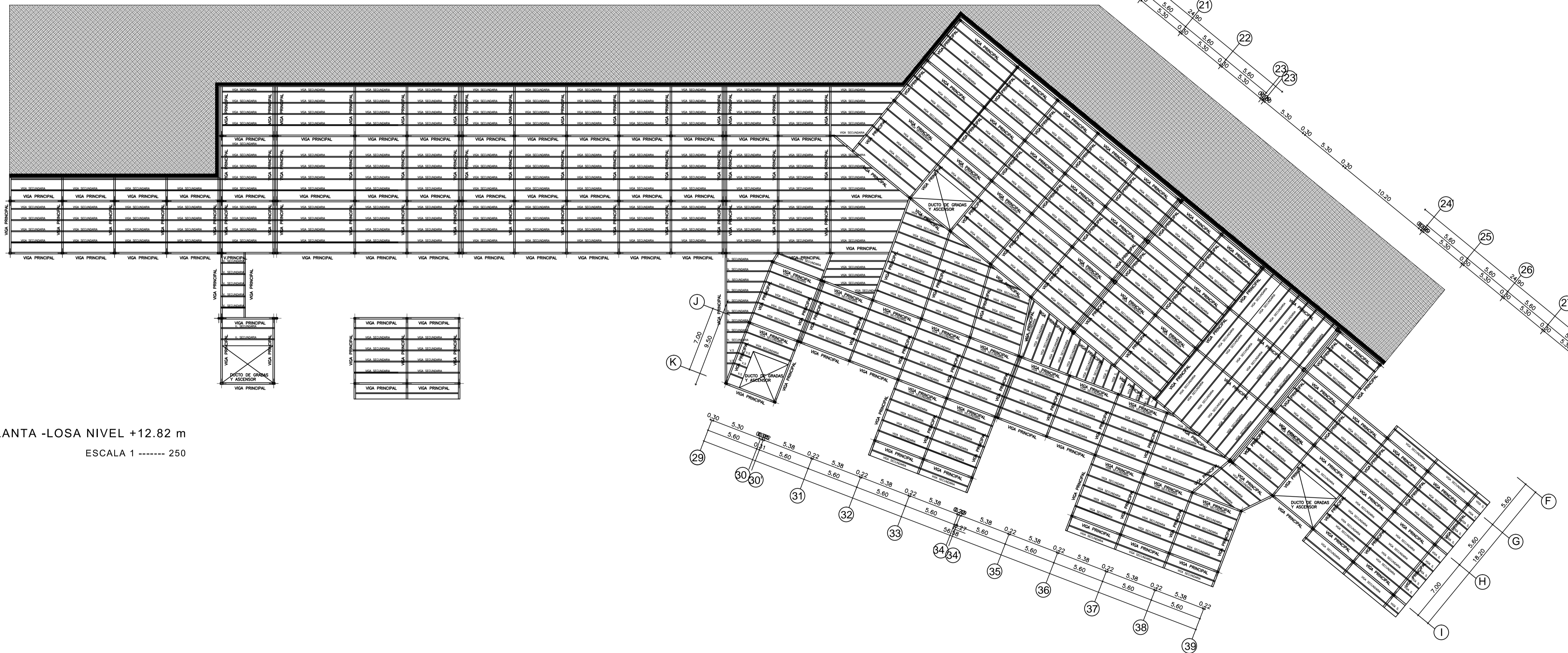
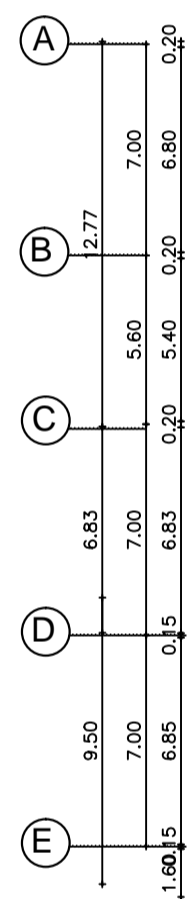
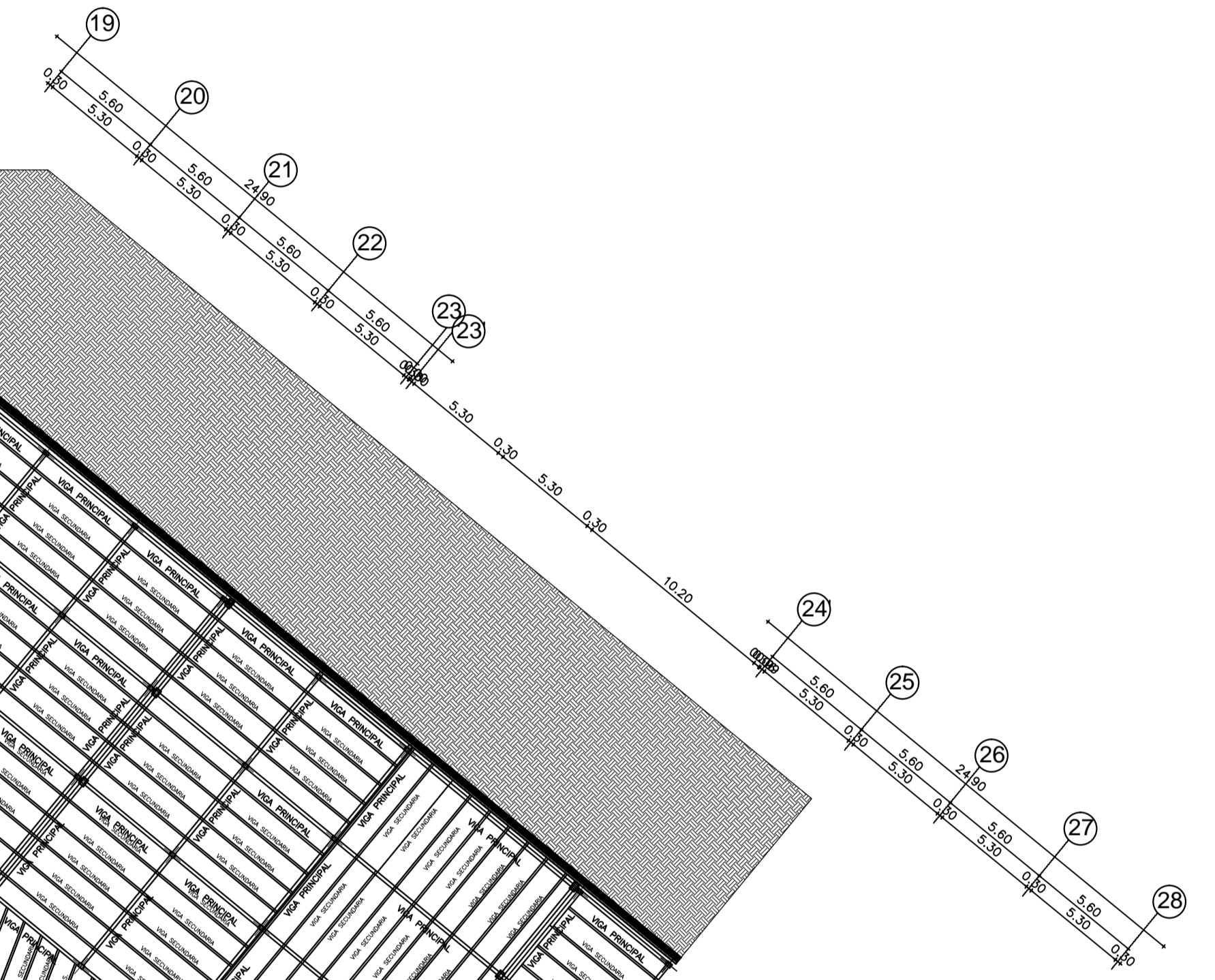
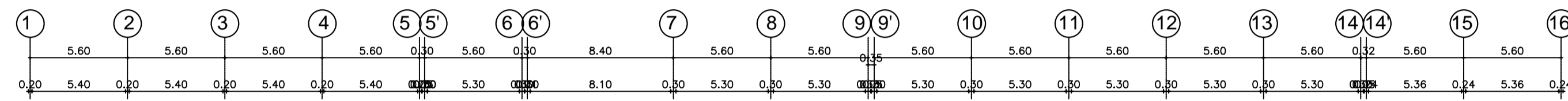
PLACA P1 - PLANTA  
ESCALA 1 -- 10



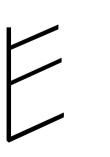
DETALLE DE CIMENTACION Y  
MEJORAMIENTO DE SUELO  
ESCALA 1:20

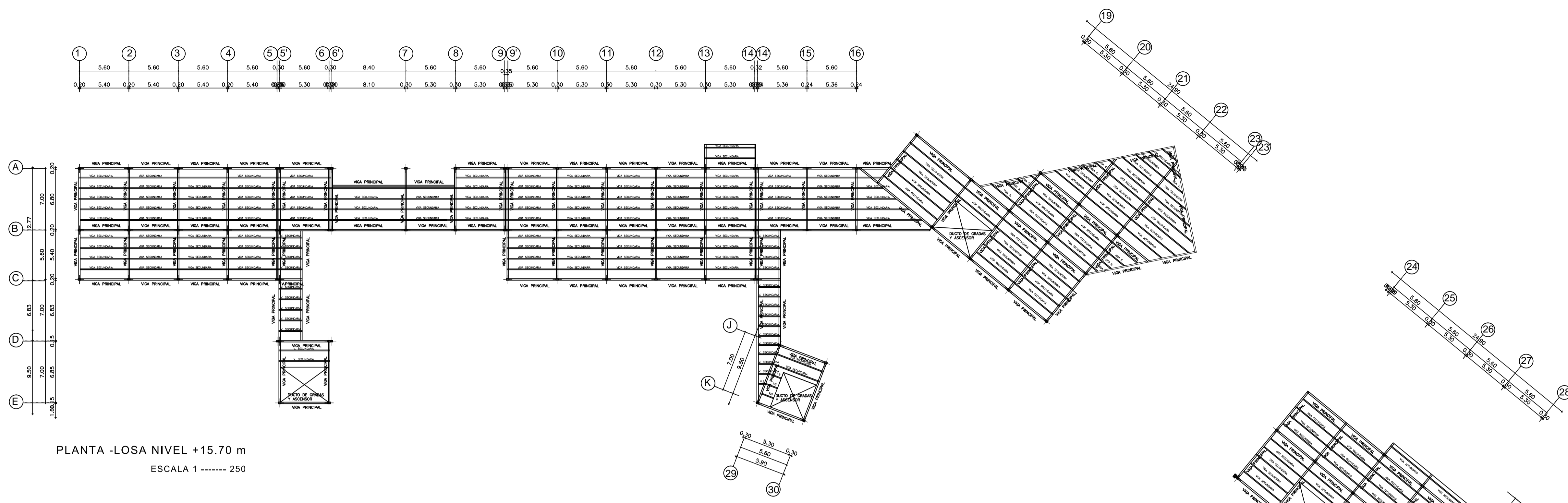


PLANTA -LOSA NIVEL +9.94 m  
ESCALA 1 ----- 250

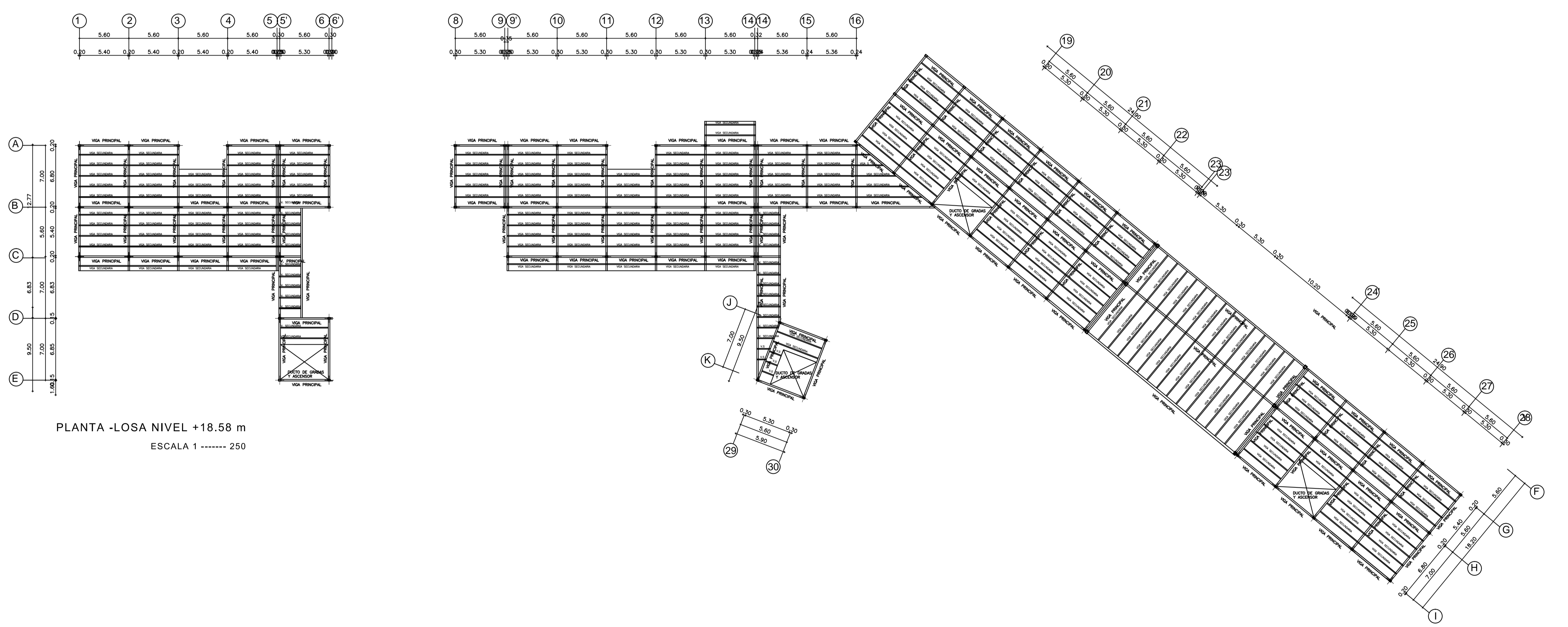


PLANTA -LOSA NIVEL +12.82 m  
ESCALA 1 ----- 250

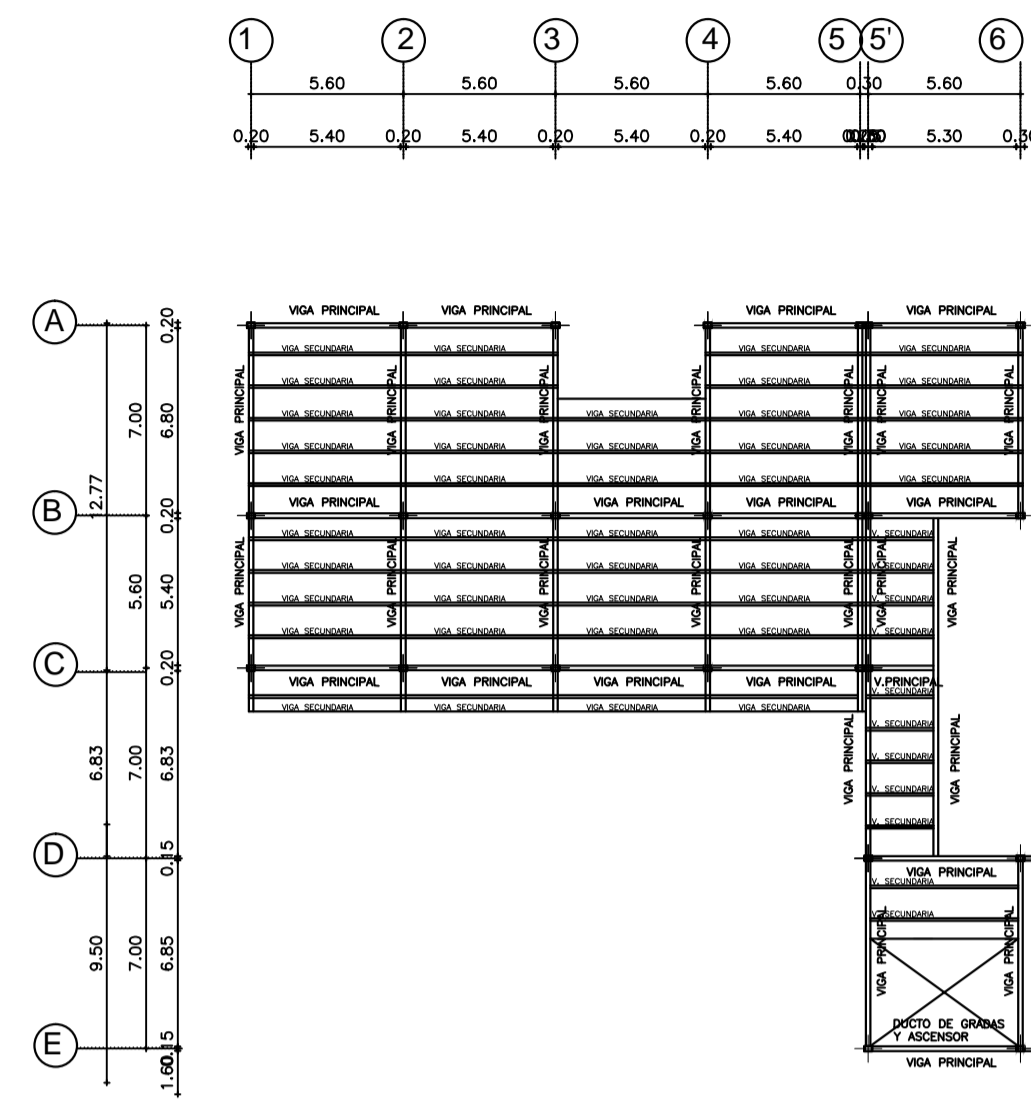




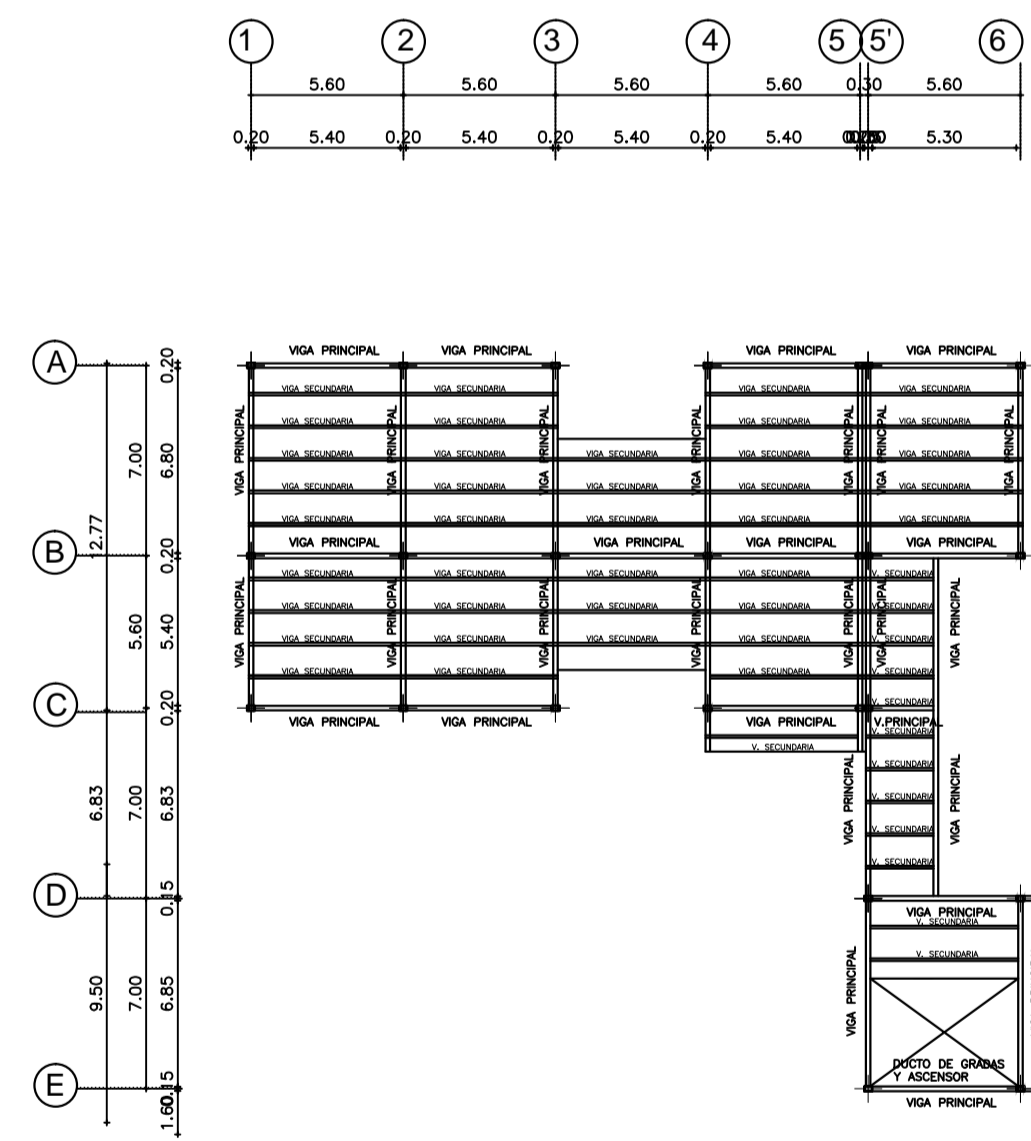
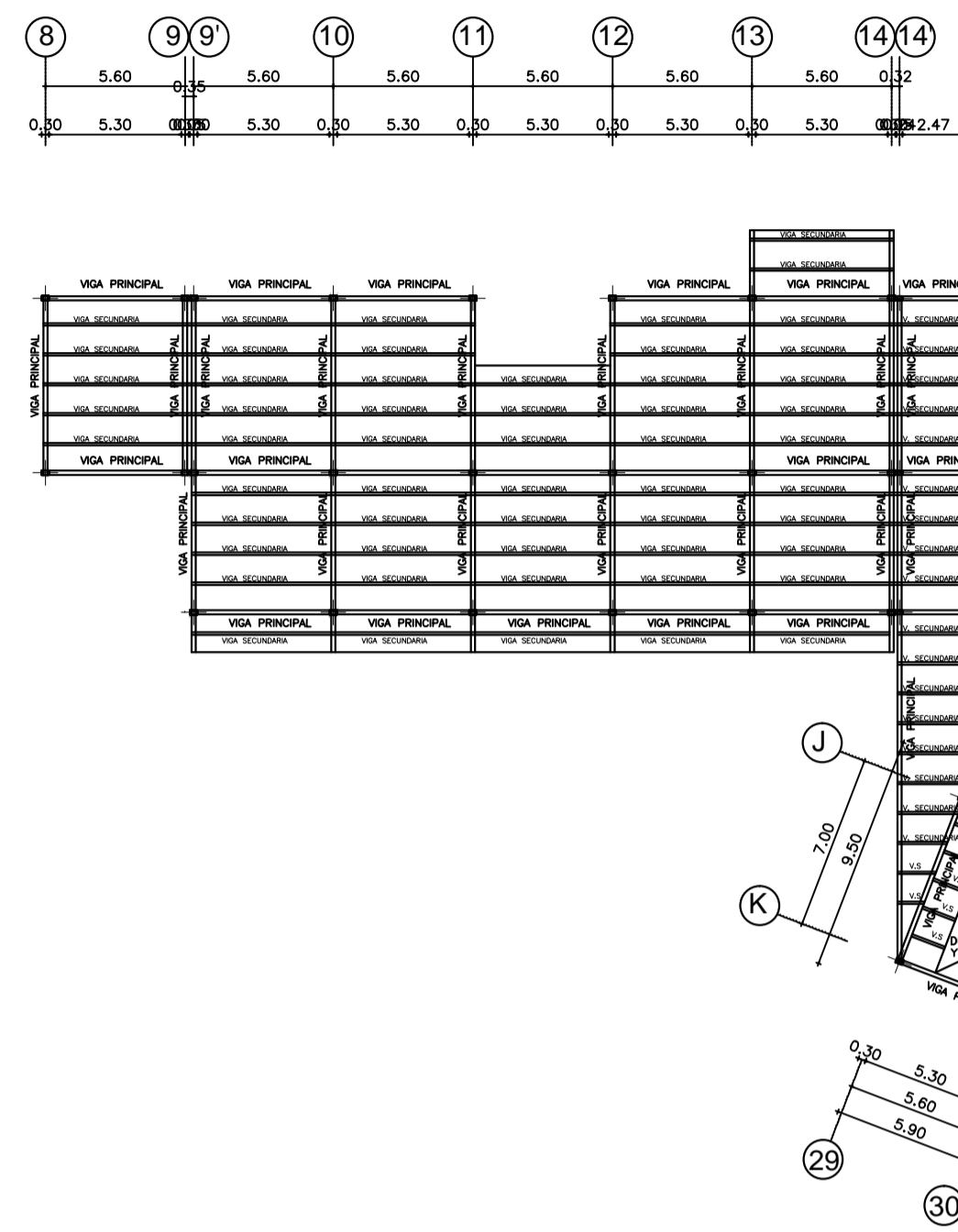
PLANTA -LOSA NIVEL +15.70 m  
ESCALA 1 ----- 250



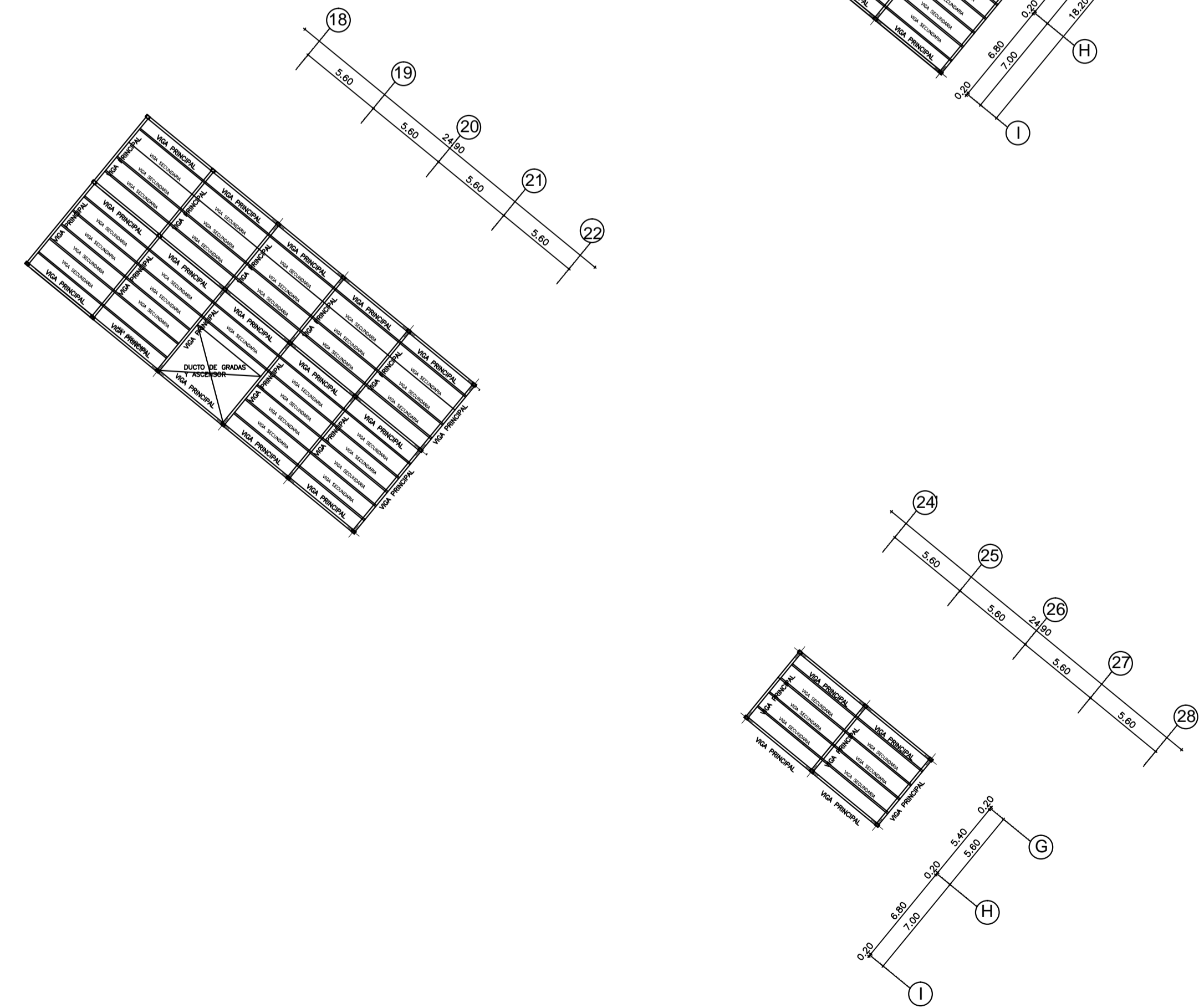
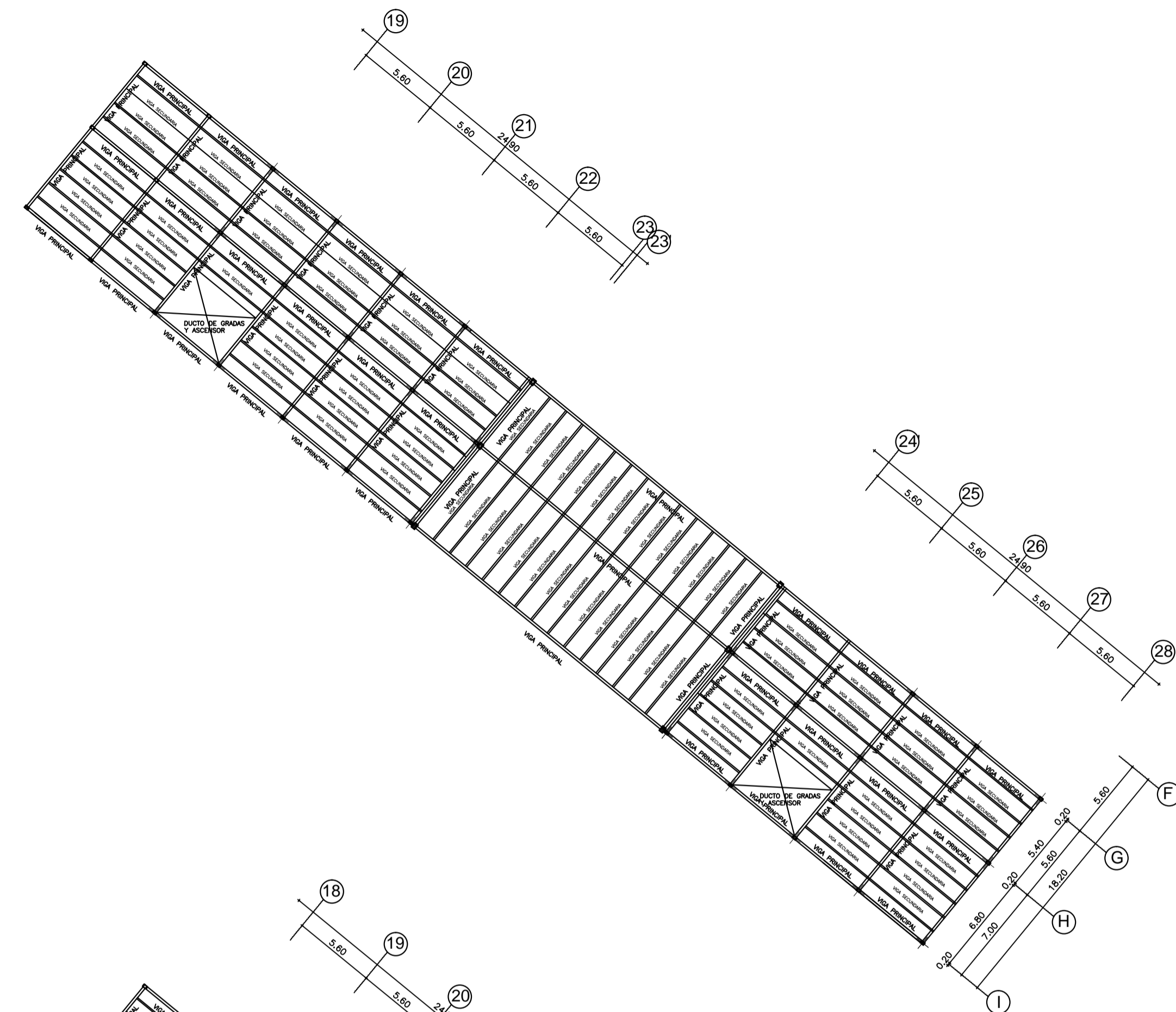
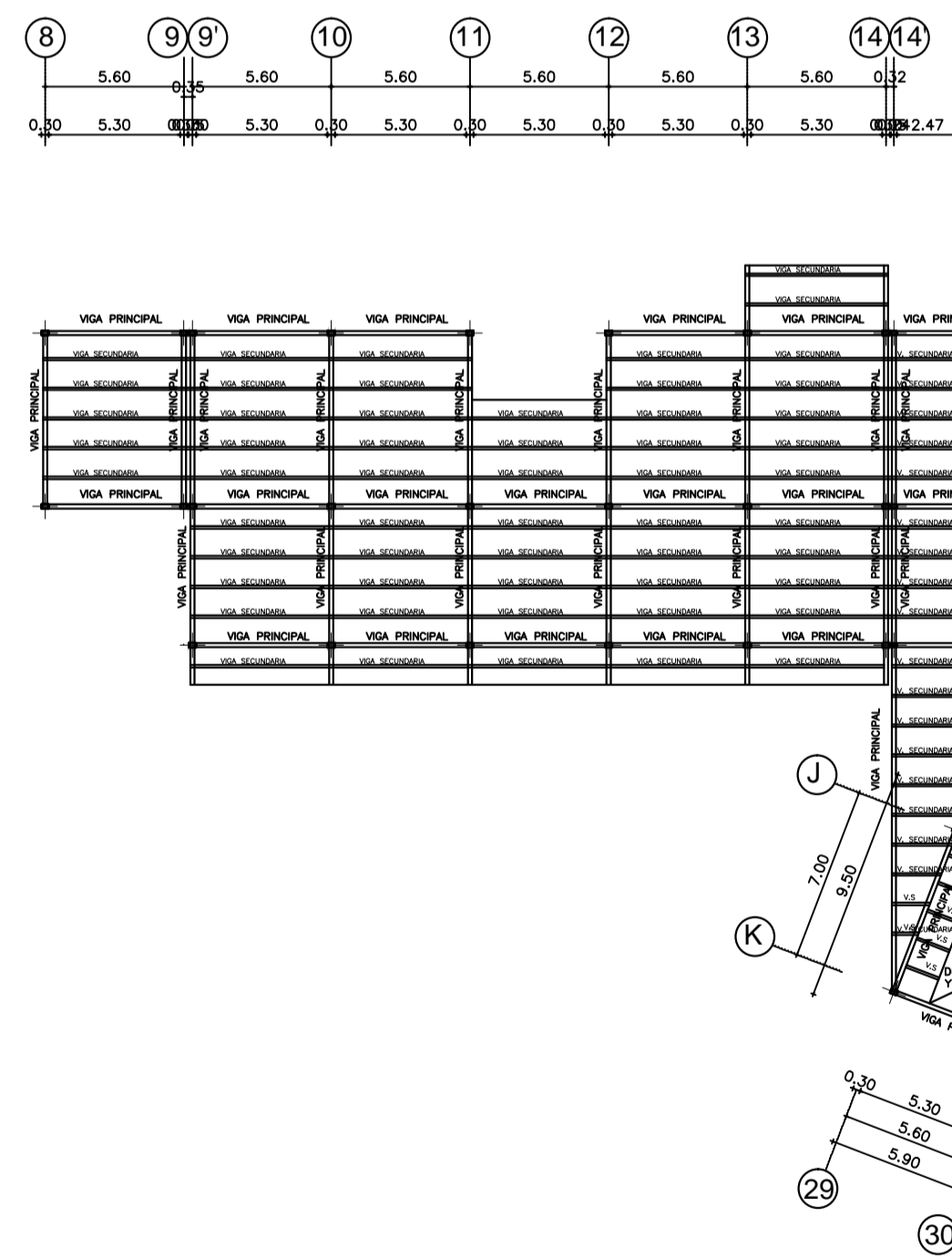
PLANTA -LOSA NIVEL +18.58 m  
ESCALA 1 ----- 250



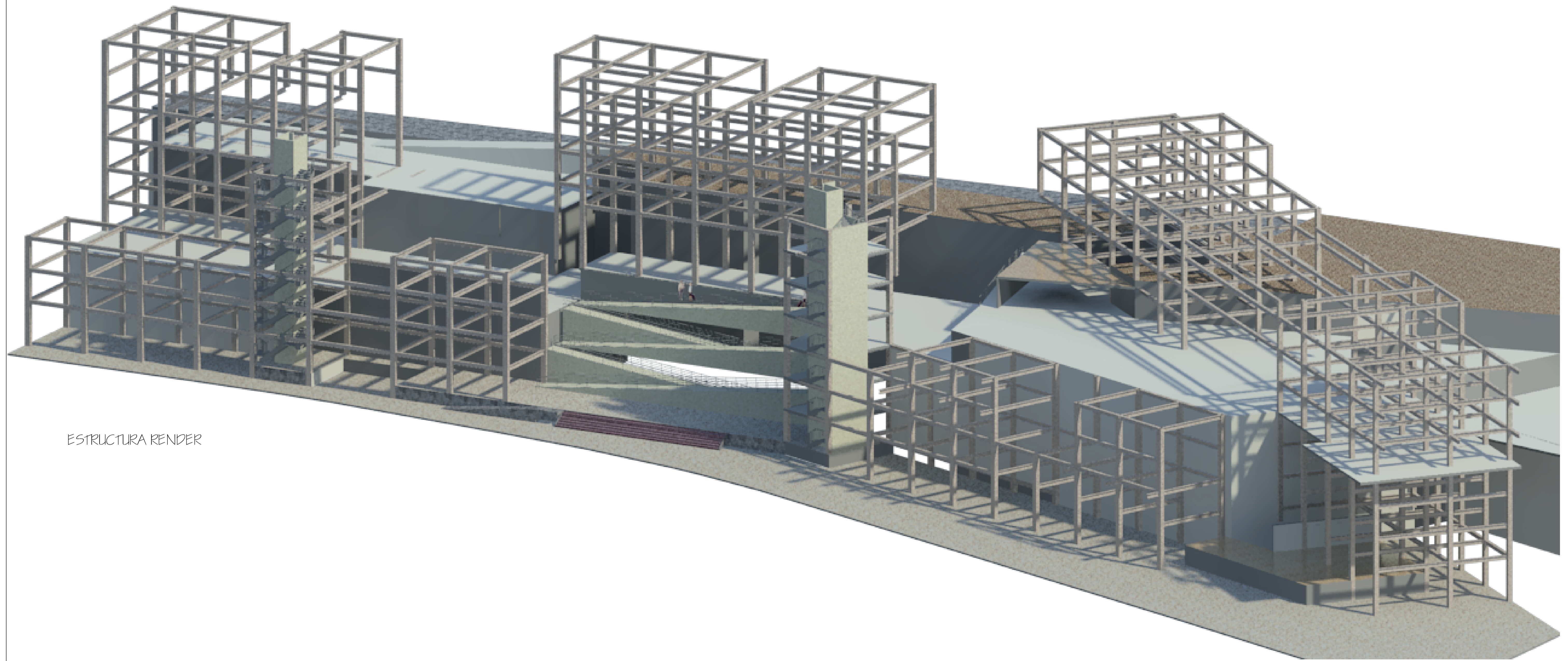
PLANTA -LOSA NIVEL +21.48 m  
ESCALA 1 ----- 250



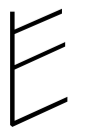
PLANTA -LOSA NIVEL +24.34 m  
ESCALA 1 ----- 250







ESTRUCTURA RENDER

<b>PONTIFICIA UNIVERSIDAD CATOLICA DEL ECUADOR</b> <b>FACULTAD DE ARQUITECTURA, DISEÑO Y ARTES</b> TRABAJO DE FIN DE CARRERA	MULTI - PACK JUVENIL ( VIVIENDA DE EMANCIPACIÓN PARA JÓVENES )		DIRECTOR DE TESIS: ARO. OSVALDO PALADINES	NOTAS TÉCNICAS:	SELLOS Y FIRMAS DE APROBACION:	UBICACION: FRANJA UNIVERSITARIA AV. MARISCAL SUCRE Y ENRIQUE RITTER		LAMINA: 9
	CONTIENE: ESTRUCTURA RENDER	BLOQUE I	NOMBRE ANGÉLICA GÁLVEZ					FECHA: 2012
							ESCALA: INDICADA	